

MONTHLY MEMBERSHIP PROGRESS REPORT

LOCATION AUSTRALIA

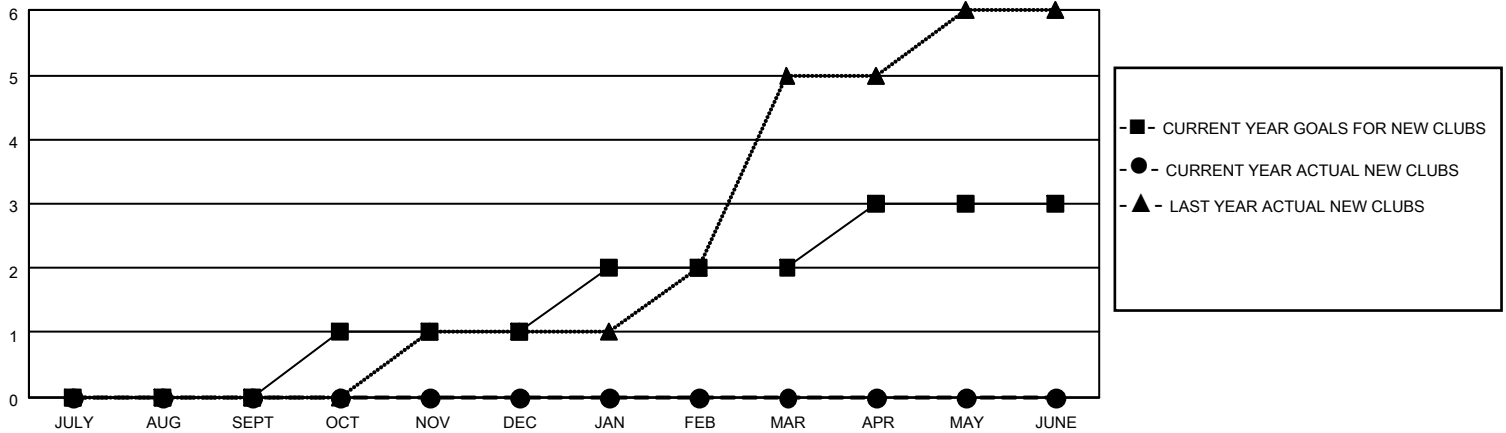
District 201Q2

Results as of: 5/31/2022

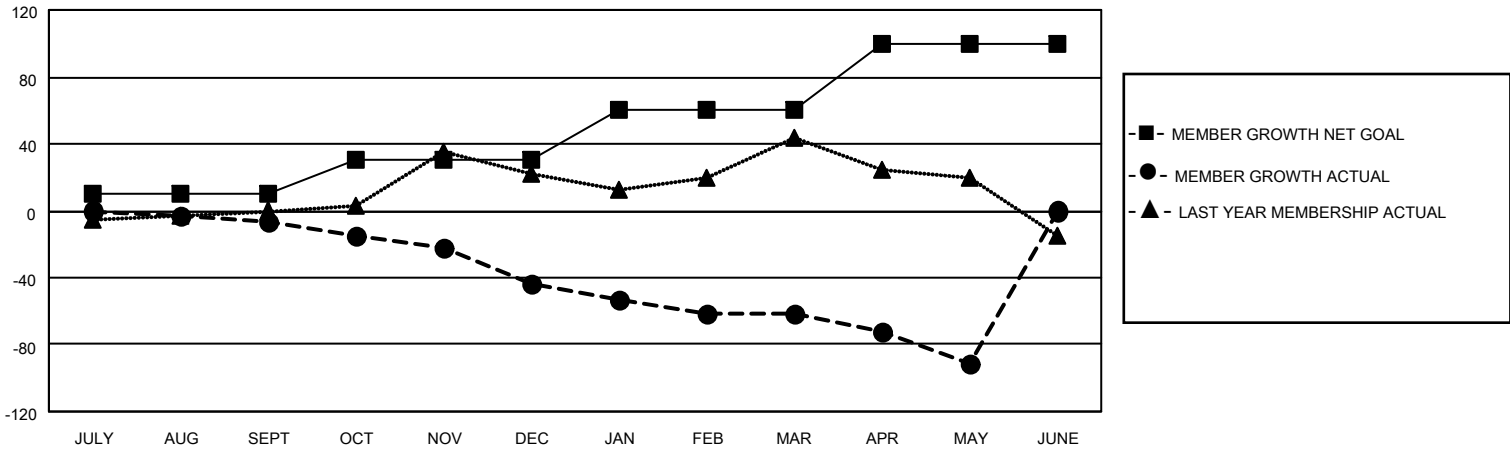
Clubs			
RESULTS FOR 2021-2022			
QUARTER	NEW CLUB GOAL	NEW CLUBS	DROPPED CLUBS
JULY/AUG/SEPT	0	0	0
OCT/NOV/DEC	1	0	0
JAN/FEB/MAR	1	0	0
APR/MAY/JUNE	1	0	0

Members			
RESULTS FOR 2021-2022			
QUARTER	MEMBER GROWTH NET GOAL	MEMBER GROWTH ACTUAL	DROPPED MEMBERS ACTUAL (including transfers)
JULY/AUG/SEPT	10	32	37
OCT/NOV/DEC	20	19	52
JAN/FEB/MAR	30	24	38
APR/MAY/JUNE	40	29	51

GOALS AND ACTUAL NEW CLUBS CUMULATIVE



GOALS AND ACTUAL MEMBERS CUMULATIVE



DROPPED CLUBS: 0	36 CLUBS OF 64 ADDED 1 OR MORE NEW MEMBERS	<p style="text-align: center;"><u>GENDER DISTRIBUTION</u></p> MALE 562 (55.04%) FEMALE 458 (44.86%) NON BINARY 0 (0.00%) PREFER NOT TO ANSWER 1 (0.10%)
<p style="text-align: center;"><u>DROPPED MEMBERS</u></p> DECEASED 21 CLUB CANCELLED 0 OTHER 157 <hr/> TOTAL 178	CLICK HERE FOR CUMULATIVE MEMBERSHIP DATA	TOTAL FAMILY UNIT MEMBERS 150 FAMILY MEMBERS PAYING HALF DUES 76